



Bautri-Rescue

Turn your shoring props into
a multipurpose tripod system



3 Shoring Props and 1 Bautri is all you need

More stable shoring work, rescue operations or moving heavy loads quicker:
The Bautri system allows you to use existing equipment more effectively.

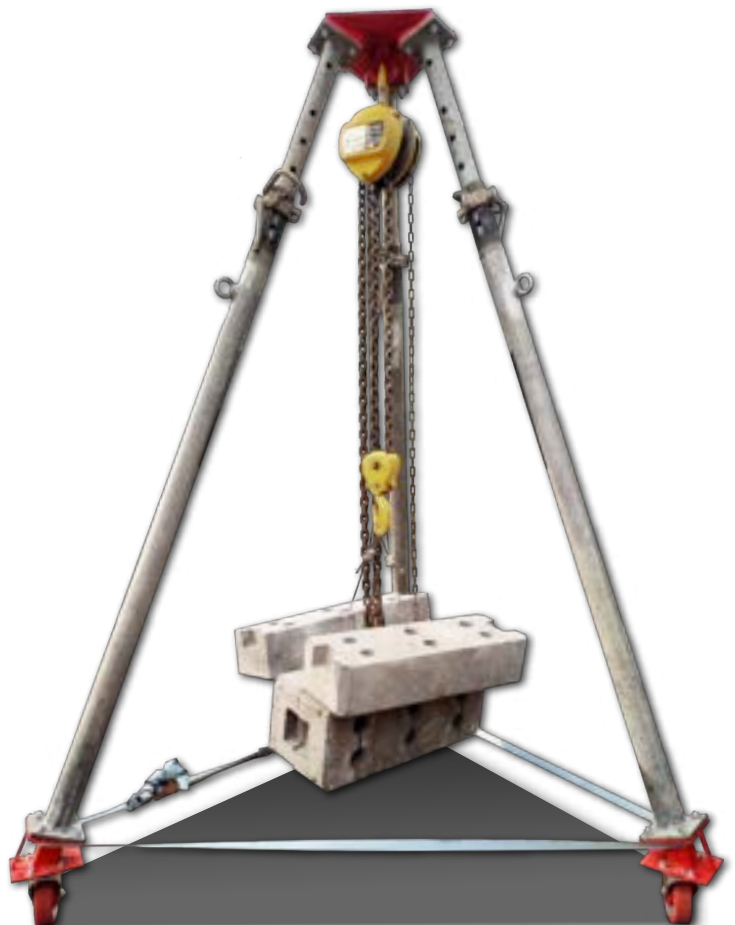
A Bautri-tripod can be set up by a single person in a short amount of time, only a wrench is needed for assembly.

The use of telescopic shoring props allows the Bautri system to be set up on uneven ground. Even large height differences can be overcome this way.

- ▶ Certified as temporary anchor point
(DIN EN 795:2012 Type B,
CEN/TS 16415:2013)

Allows the simultaneous
belaying of up three people at a
mass of **100 kg per person** (~220 lbs)

- ▶ Maximum load capacity when used
as a load handling system (2006/42/
EG (MaschRL)): **2000 kg** (~ 4409lbs)
- ▶ Weight: **15 kg** (~13 lbs)
- ▶ Pack Size: **40 x 40 x 15 cm**
(~16" x 16" x 6")
- ▶ Certified manufacturer
(EXC3 as per DIN EN 1090-2:2019)





Bautri as a substitute for the THW's standard issue rescue tripod

The Bautri in operation



Mobile chain hoist to quickly move loads, made out of a Bautri-tripod with attached wheels



"The Bautri system is an integral part of our rescue team and has proven its worth as an operational tool.

It allows us to optimally supplement our equipment and set up a reliable tripod system in the shortest possible time.

Thanks to the wide range of accessory options, we are well prepared for all situations and will be able to help people in need quickly and professionally in the future - exactly what matters in a deployment."

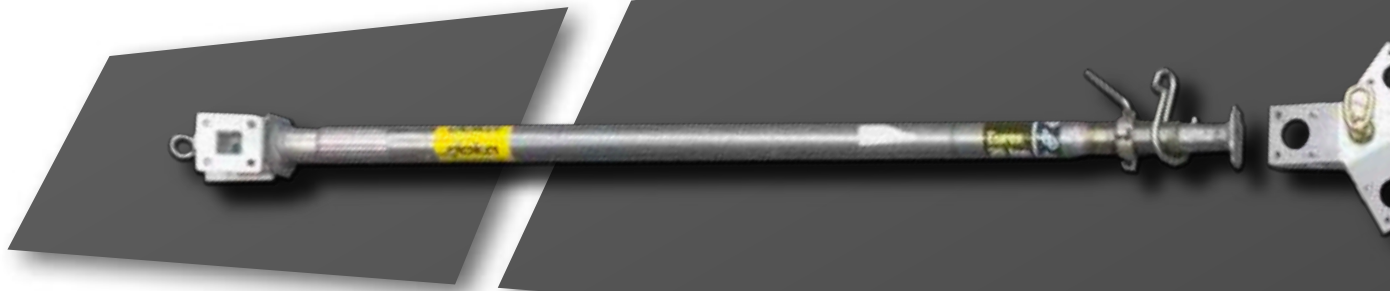
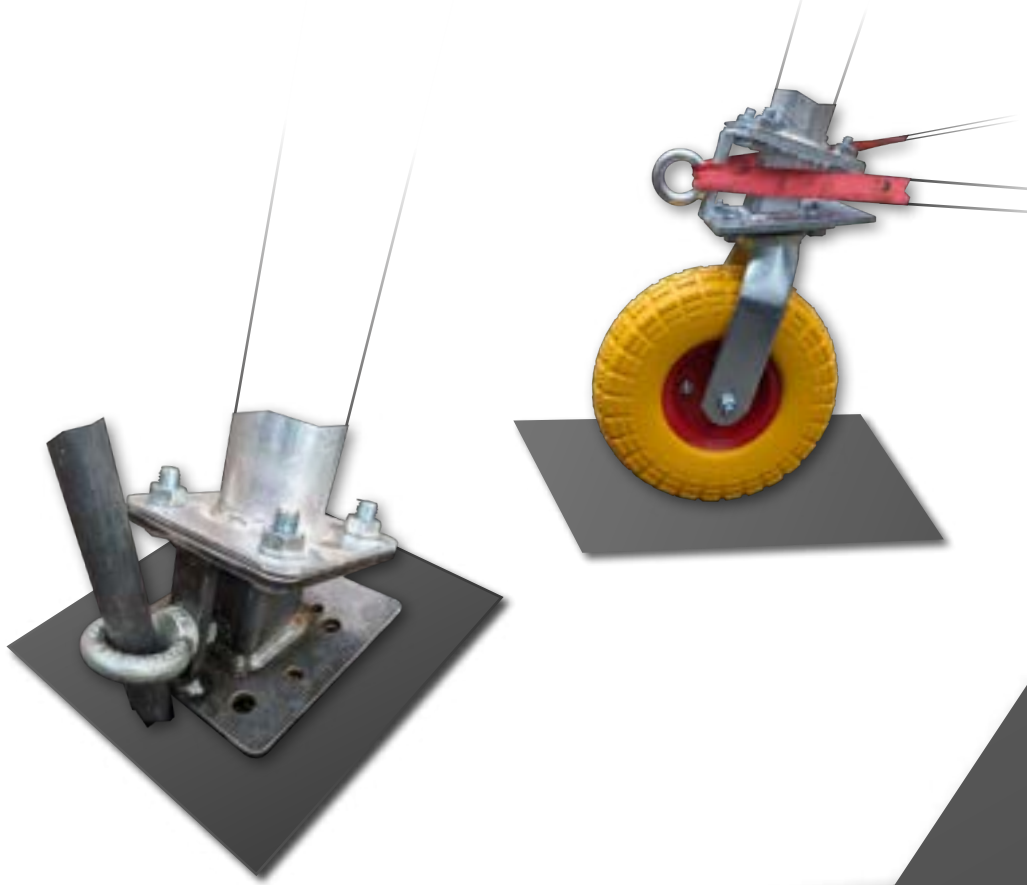
Jan Fäller,
platoon leader THW Fulda

Stable Footing

Whether ground nails or chains, round slings or webbing slings:

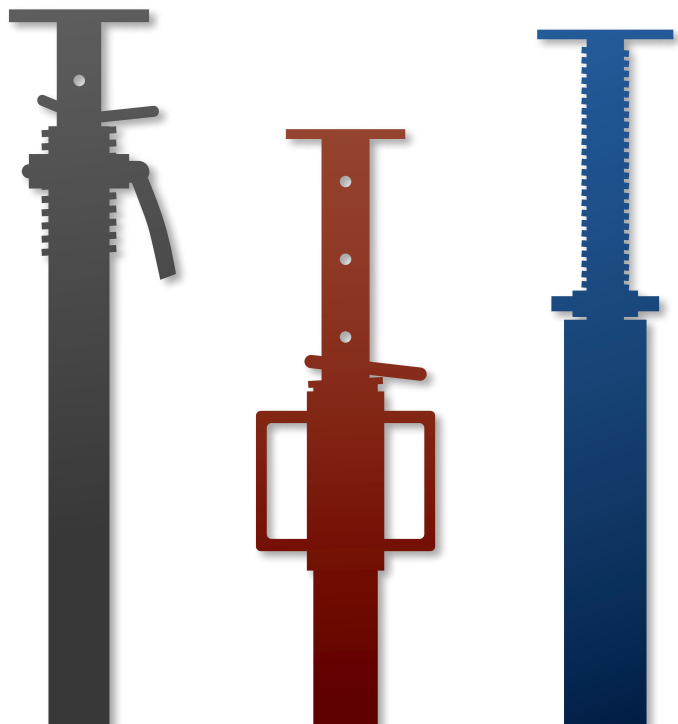
The eye bolts on the feet of the Bautri system make it possible to secure the tripod in different ways.

If required, wheels or heavy-duty castors can be attached to the base plates.



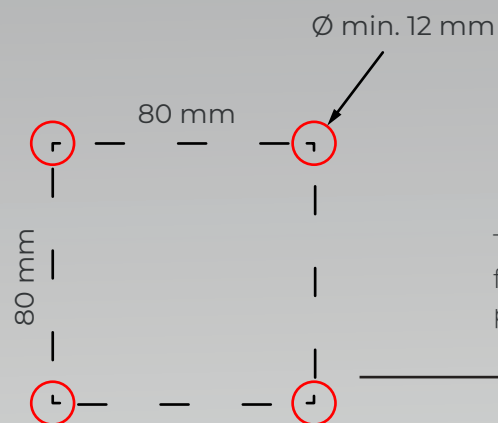
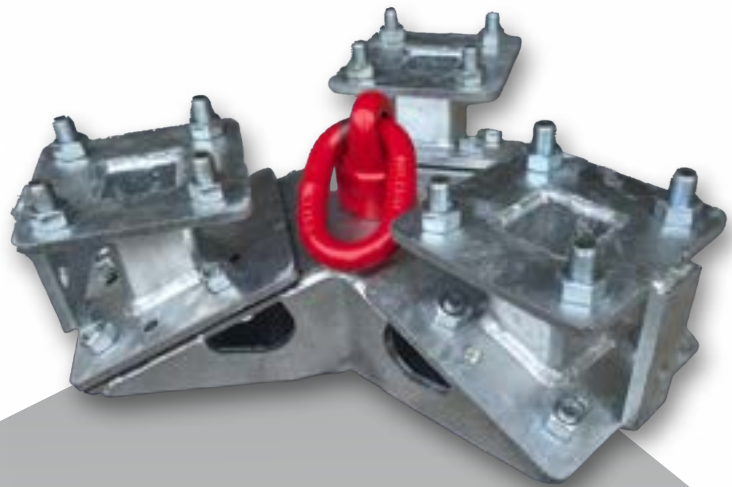
High Compatibility

The Bautri-System is compatible with all standard shoring props of the DIN EN 1065, class B, D or BD, as well as props like the Ischebeck Titan HV

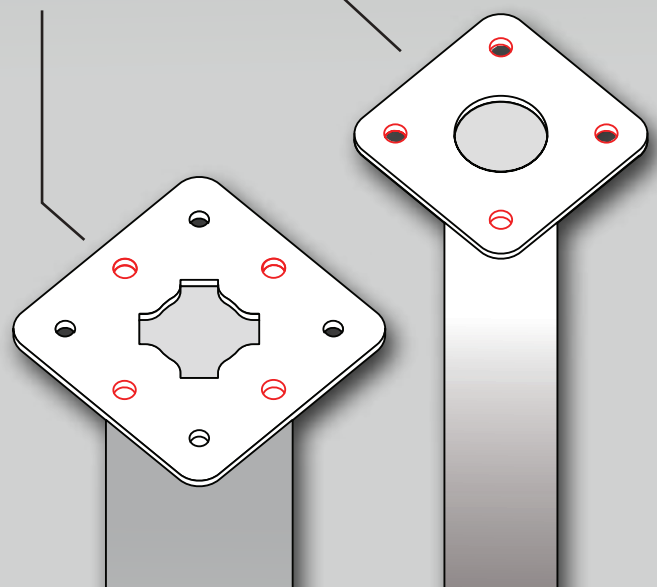


Quickly Deployed

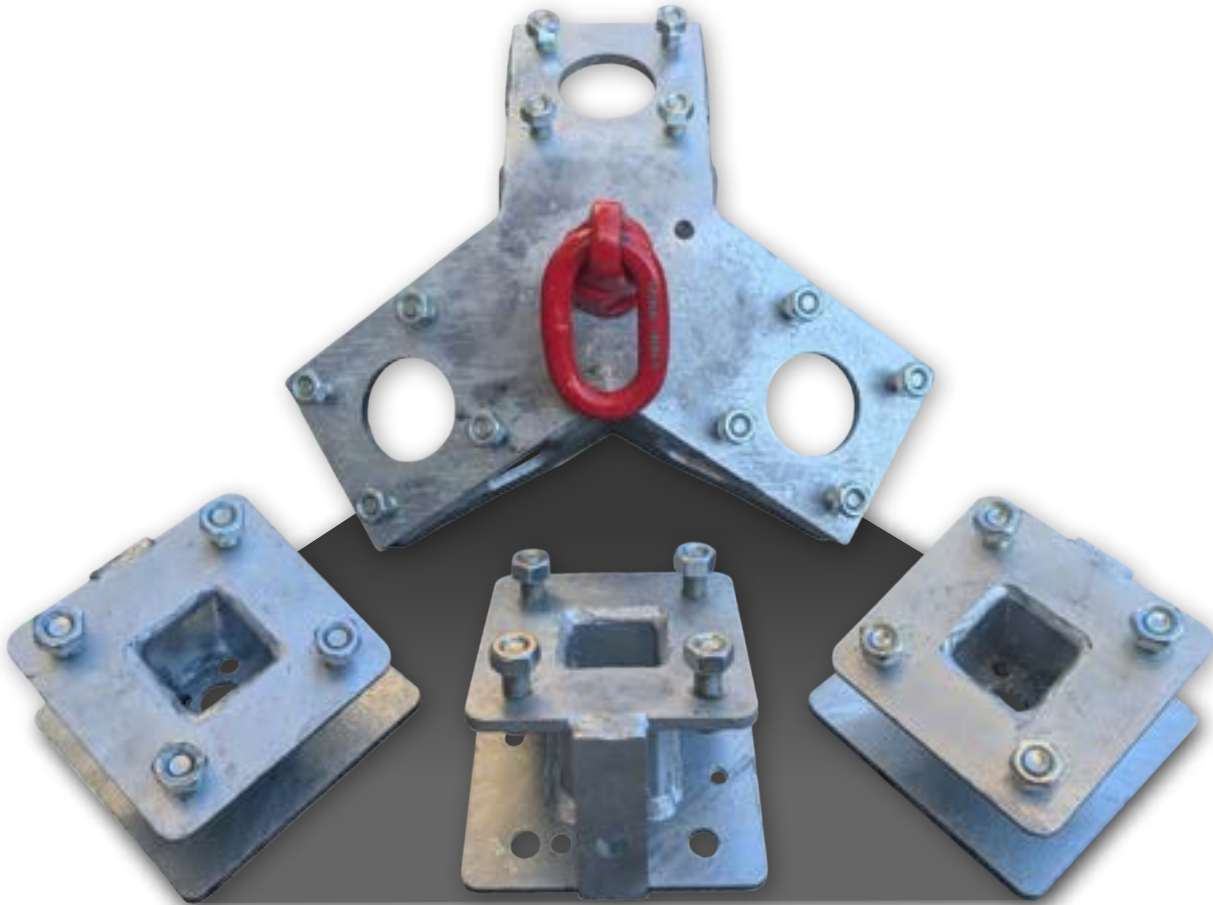
The screws for mounting the props are already fixed to the flanges of the Bautri. Only the nuts need to be tightened to assemble the tripod.



The standardized hole pattern fits a wide variety of base plates.



Bautri-Rescue



Features

- ▶ certified attachment swivel
- ▶ additional holes in the top plate for anchor points and standard pegs (DIN 14640) (to mount spotlights)
- ▶ Marotech „MT Secure OP“ anti-slip lining on the foot plates

Scope of delivery

- ▶ top plate
- ▶ three base plates
- ▶ hardware set
(24x M12x30 hex bolts / 24x M12 hex nuts)
- ▶ M20 eye bolt
- ▶ M20 hex nut
- ▶ 3x M12 eye bolt with hex nuts

Optional Transport Case



- ▶ outer dimensions: 47x21x37cm
- ▶ fits one Bautri system, a chain hoist, heavy-duty castors, ratchet strap, skidder chain and additional hardware
- ▶ extremely durable
- ▶ water-proof

Use cases currently awaiting approval

The following constructions are neither tested nor approved.
They serve merely as an example of the versatility of the Bautri system.

Disclaimer

1. Certified application
The adapter is approved exclusively for use as a PPE anchorage device (in accordance with DIN EN 795:2012 Type B) and as a mobile load lifting and support system (in accordance with 2006/42/EC (MaschRL)).
Any other use is at the user's own risk.
2. User responsibility
The user is obliged to check the compatibility of the props (material, diameter, load-bearing capacity) and to ensure that they are installed correctly.
Regular safety checks of the entire system are mandatory.
3. Limitation of liability
We accept no liability for damage or consequences caused by:
 - Incompatibility of components
 - Improper use or installation
 - Non-certified usage scenariosWarranties only apply in the event of verifiable manufacturing defects in the Bautri adapter.

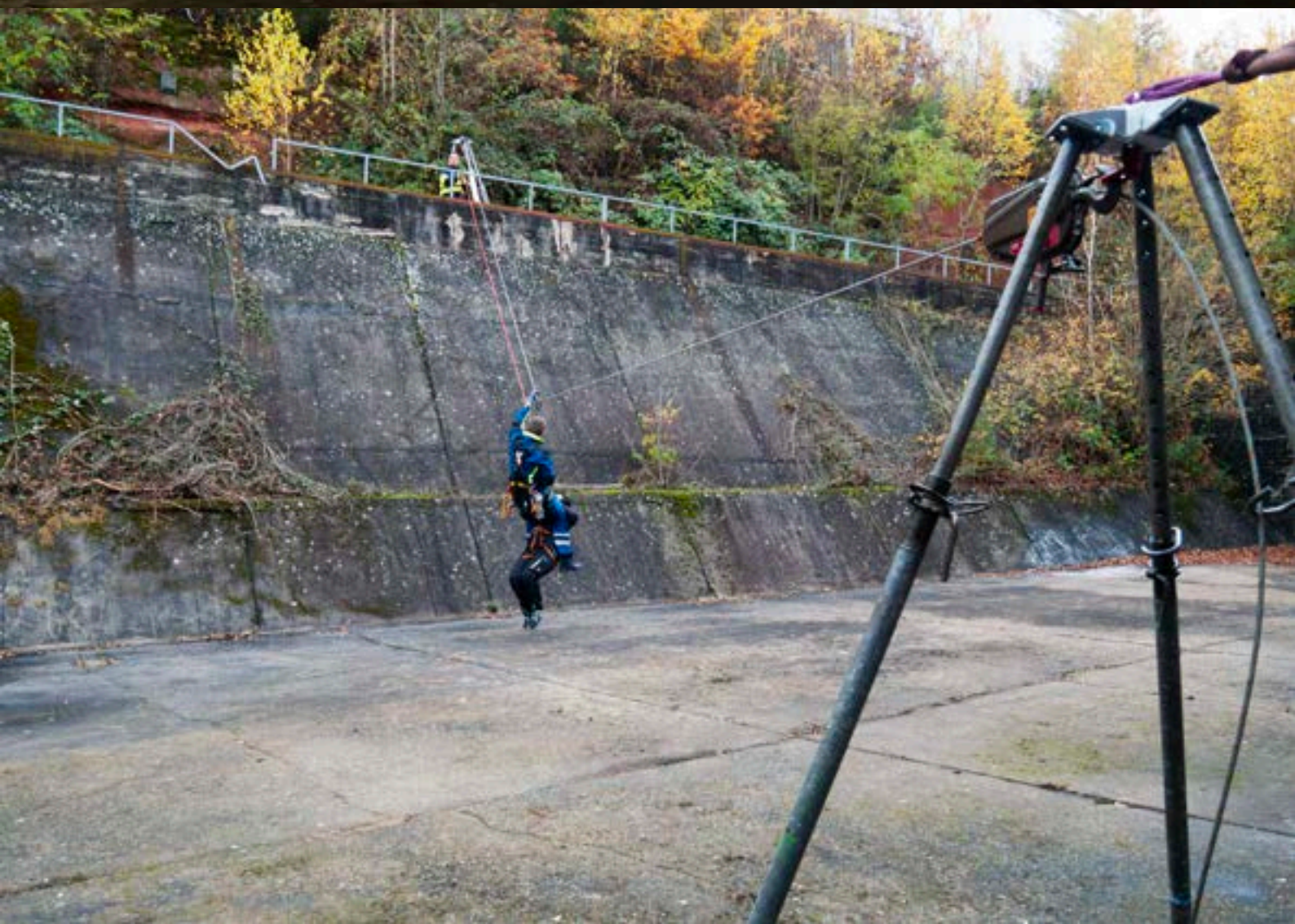
Photos are for illustration purposes only and do not constitute a guarantee of properties.



Inclined plane for rescue
from heights, using a Bautri
tripod as substructure



A fourth prop mounted on a Bautri tripod as a spotlight mount



Other products from our portfolio



Vario-Load-Series

Modularly configurable load carriers -
Equipped for every application



Trolley ramps

Easily overcome obstacles
in the urban space



VenturiPulse

Effectively aerate stagnant water with
the Venturi effect

Our website



inventied GmbH

Industriegebiet Kreuzwiese 11
67806 Rockenhausen
Germany
T +49 1590 61 950 03
info@inventied.de
www.inventied.de

