

VARIOLOAD

Pump



Safe. Modular. Ready to use.

Vario-Load-Pump

Your carrier for
flood defense and
long-distance pumping

Vario-Load-Pump preconfigured and optimized for pumping applications

Concept

- Quick response time:
Necessary equipment is already loaded for transport.
- Immediately deployable on site:
Fast and ergonomic unloading thanks to an integrated chain hoist system and jib crane.
- Structured compartments enable easy tracking of loaded inventory
— Surpluses and shortages can be quickly identified and eliminated.
- Shorter operating times—reduced costs.
- Can be deployed by smaller teams.

Technical Data

Length	7300 mm (~24 ft)
Width	2480 mm (~8 ft)
Height	2440 mm (~8 ft)
Weight of equipment	7,5 t (~ 16 534 lbs)
Weight of carrier	1,5 t (~ 3307 lbs)
Possible certifications	<ul style="list-style-type: none"> • §22 StVO, VDI 2700 ff by TÜV Süd • DIN 33411 • DIN 33402

Exemplary total weight with swap body and carriage: 14.6 t.
Data may vary, depending on configuration.



Loaded standard equipment

The Vario-Load-Pump contains all materials required for pumping fresh, waste and sewage water. In addition to necessary hoses and cables, it also contains electrical distribution boxes and buffer tanks.

- Submersible pumps with a capacity of 800-3000 l/h
- Hoses (Storz F, A, B, C)
- Electrical- & water distributors and armatures
- Electrical cables (CEE 400 V, 16 A, 32 A & 63 A)
- Folding water tank for pressure boosting stations
- Necessary tools for field repairs
- Personal protective equipment for wastewater handling

Careful storage of equipment increases its service life and reduces the cost of replacements.

more information



Your Benefits

Safety

- Certification according to §22 StVO, VDI 2700 ff by TÜV Süd planned.
- Reduced risk of injury due to optimized loading space.
- Intuitive and fast securing of load through predefined locking mechanisms.
- Safe operation as well as loading and unloading is guaranteed.

Ergonomics

- Fulfilling the ergonomics requirements according to DIN 33411 & DIN 33402.
- All equipment is easily accessible.
- Ensuring accessibility through wide, extendable stairs.

Sustainability

- More effective use of loading space: Approx. 30 % more material can be transported in one run compared to standard loading. This significantly reduces the fuel consumption of motorized units.
- Production and assembly in Germany.
- The modular construction enables resource-efficient repairs in the event of damages and future changes of equipment.
- Low maintenance costs compared to a motorized vehicle.

Quality and reliability

- High durability thanks to hardwearing, corrosion protected materials.
- Successfully tested for continuous loading.
- Field proven design, based on extensive research and experience



More effective loading and unloading

Ergonomical and quick

- Heavy-duty pull-outs allow easy access to heavy equipment
- No more heavy lifting thanks to the ceiling mounted chain hoist system

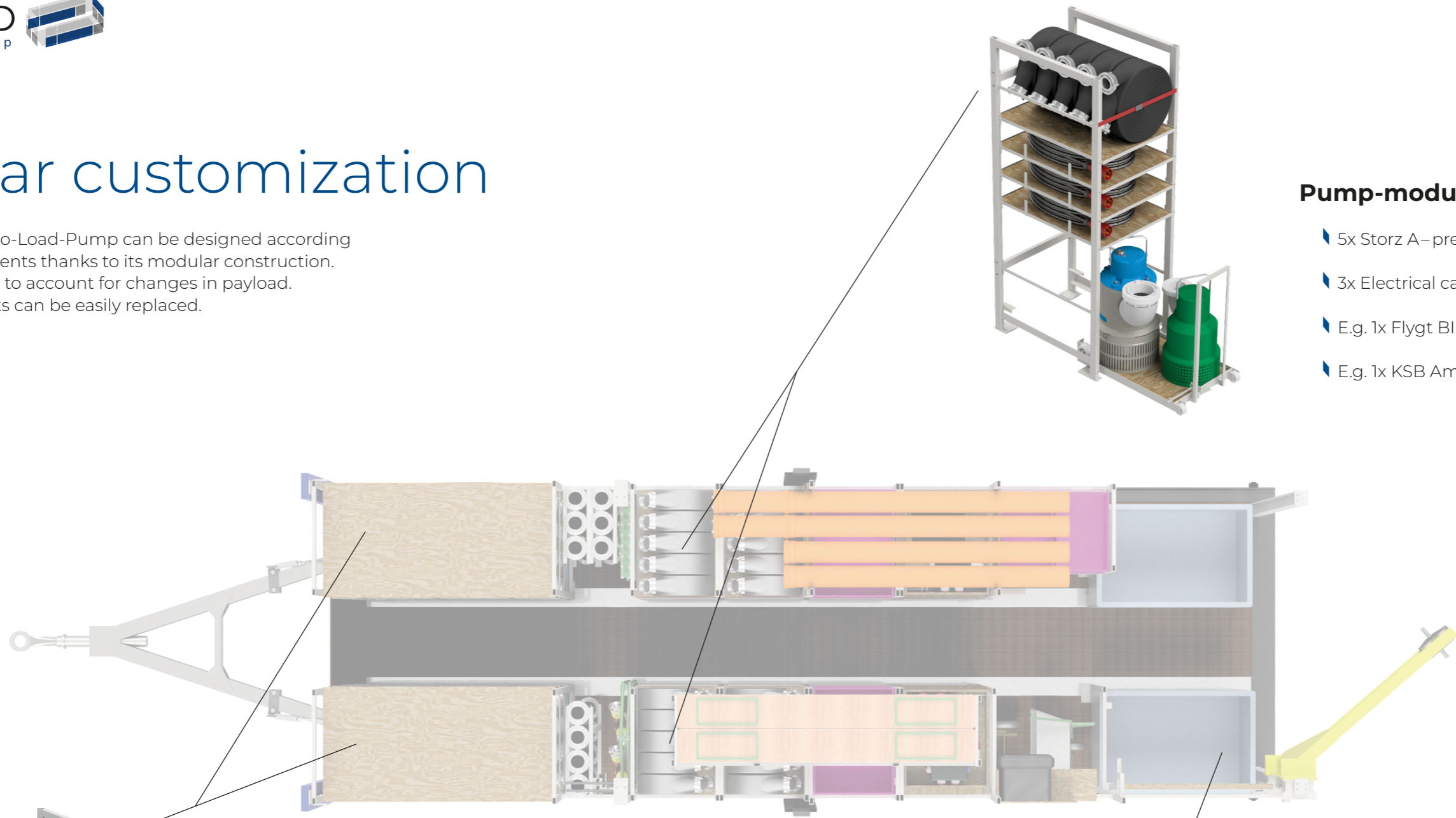
Jib crane

- Load capacity: 250 kg (~ 551 lbs)
- Electric chain hoist
- Overhang: 1300 mm (~4.26 ft)



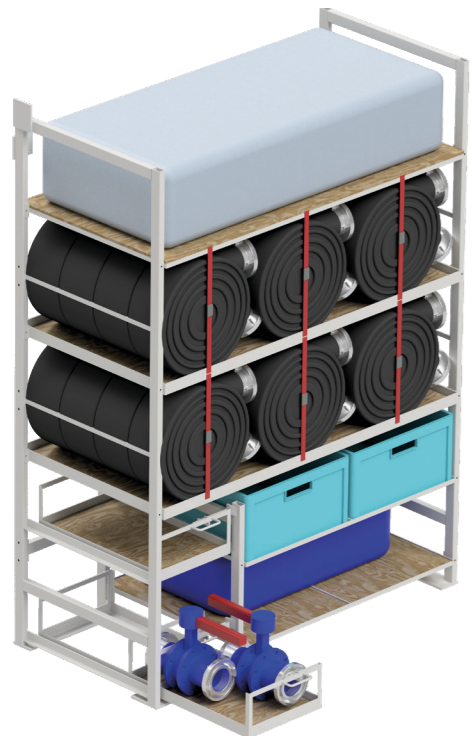
Modular customization

The interior of the Vario-Load-Pump can be designed according to customer requirements thanks to its modular construction. It can also be adapted to account for changes in payload. Individual components can be easily replaced.



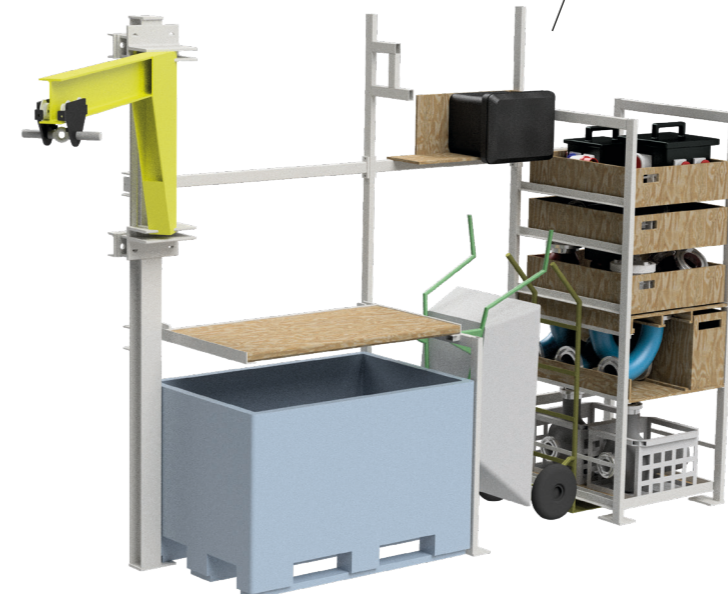
Pump-module with pull-out

- 5x Storz A–pressure hoses, 20m (~65.6 ft) each
- 3x Electrical cable 16A/400V, 50m (~ 164 ft) each
- E.g. 1x Flygt BIBO
- E.g. 1x KSB Ama-Drainer



Folding water tank-module

- Customizable storage
- 24x Storz A–pressure hoses, 20m (~65.6 ft) each
- 2x Euro-Box
- 2x Storz A–Gate valves
- Two pull-outs
- 1x Folding water tank 8000l capacity

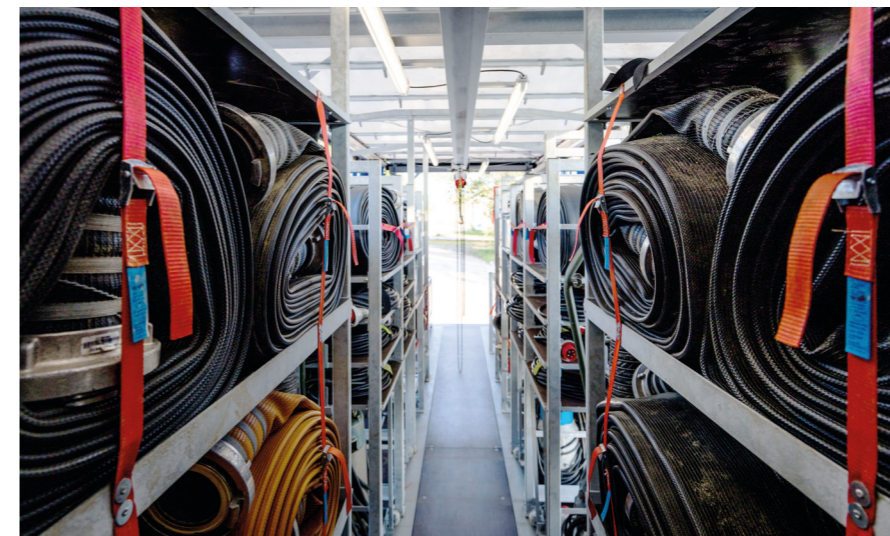


Workbench-module

- Foldable workbench for field repairs
- Space for a wheelbarrow and hand cart
- Movable wheeled container



VARIOLOAD
Pump 



Lighting package

Features

- ▮ Switchable interior and exterior lighting
- ▮ Self-sufficient lighting duration of up to 14 h when all devices are used
- ▮ Low-maintenance and robust LED lighting for extreme environments
- ▮ Cold-resistant battery (discharging down to -20°C, charging down to -10°C)
- ▮ Electrical safety according to VDE 0100-717

Variable power supply options

- ▮ Connection to power grid
- ▮ Optional: power generator
- ▮ Optional: connection to vehicle power lines



Variations

The unique design of the carrier system makes individual adaptations based on your requirements possible.

By choosing the swap body or loadable system design, several individual units can be kept in stock and be moved by only one chassis without significantly increasing operating costs.

The following combinations are possible:

- ▮ Roll-off container
- ▮ ISO container
- ▮ Tarpaulin & hoops trailer
- ▮ Swap body
- ▮ Special trailers for the German Armed Forces, etc.

The Vario-Load Universe

We develop individual, operation-optimized carriers for you.



Vario-Load-Rescue

The carrier for specialised equipment operational scaffolding system, usable for different special constructions in the field of disaster relief.



Vario-Load-Flood

With the Vario-Load-Flood, flood relief equipment can be stored professionally and made available to municipalities in flood risk areas. This enables the equipment to be transported quickly to the required locations with only a small expenditure of resources and the necessary time savings.



Vario-Load-Pump

With the Vario-Load-Flood, flood materials can be stored professionally and made available to municipalities in flood risk areas. This enables the flood materials to be transported quickly to the required locations with only a small expenditure of resources and the necessary time savings.



Vario-Load-Paramedic

As an innovative, mobile first aid station, the Vario-Load-Paramedic aims to optimize the treatment at treatment stations. With a larger treatment capacity than regular first-aid stations, the Vario-Load-Paramedic is faster and easier to set up than any other first-aid station on the market.

Our Website



inventied GmbH

Industriegebiet Kreuzwiese 11
67806 Rockenhausen
T +49 1590 61 950 03
info@inventied.de
www.inventied.de

